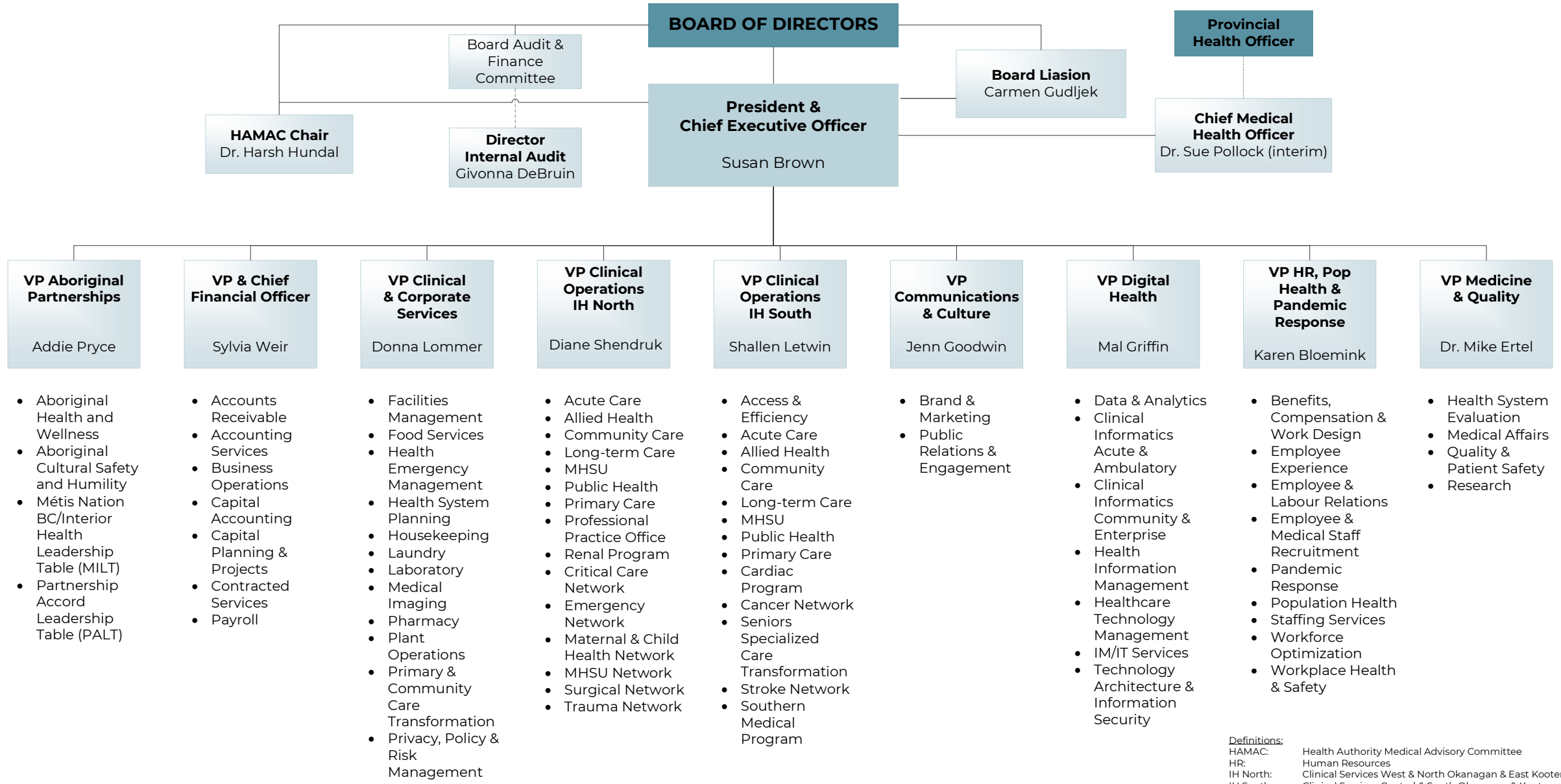


Senior Executive Team Structure and Functional Responsibility



- Aboriginal Health and Wellness
- Aboriginal Cultural Safety and Humility
- Métis Nation BC/Interior Health Leadership Table (MILT)
- Partnership Accord Leadership Table (PALT)

- Accounts Receivable
- Accounting Services
- Business Operations
- Capital Accounting
- Capital Planning & Projects
- Contracted Services
- Payroll

- Facilities Management
- Food Services
- Health Emergency Management
- Health System Planning
- Housekeeping
- Laundry
- Laboratory
- Medical Imaging
- Pharmacy
- Plant Operations
- Primary & Community Care Transformation
- Privacy, Policy & Risk Management

- Acute Care
- Allied Health
- Community Care
- Long-term Care
- MHSU
- Public Health
- Primary Care
- Professional Practice Office
- Renal Program
- Critical Care Network
- Emergency Network
- Maternal & Child Health Network
- MHSU Network
- Surgical Network
- Trauma Network

- Access & Efficiency
- Acute Care
- Allied Health
- Community Care
- Long-term Care
- MHSU
- Public Health
- Primary Care
- Cardiac Program
- Cancer Network
- Seniors Specialized Care
- Stroke Network
- Southern Medical Program

- Brand & Marketing
- Public Relations & Engagement

- Data & Analytics
- Clinical Informatics
- Ambulatory
- Clinical Informatics
- Community & Enterprise
- Health Information Management
- Healthcare Technology Management
- IM/IT Services
- Technology Architecture & Information Security

- Benefits, Compensation & Work Design
- Employee Experience
- Employee & Labour Relations
- Employee & Medical Staff Recruitment
- Pandemic Response
- Population Health
- Staffing Services
- Workforce Optimization
- Workplace Health & Safety

- Health System Evaluation
- Medical Affairs
- Quality & Patient Safety
- Research

Definitions:
 HAMAC: Health Authority Medical Advisory Committee
 HR: Human Resources
 IH North: Clinical Services West & North Okanagan & East Kootenay
 IH South: Clinical Services Central & South Okanagan & Kootenay Boundary
 MHSU: Mental Health & Substance Use
 Pop Health: Population Health